

Received
Planning Division
01/23/2023

August 30, 2022

ASHLEY DOTY
3J CONSULTING, INC.
9600 SW NIMBUS AVE, SUITE 100
BEAVERTON, OR, 97008

RE: 5495 SW Erickson Avenue; Evelyn Schiffler Memorial Park Restroom Project; CWS file
22-001887 (Tax map 1S116DC Tax lot 05100)

Clean Water Services has received your Sensitive Area Certification for the above referenced site. District staff has reviewed the submitted materials including site conditions and the description of your project. Staff concurs that the above referenced project will not significantly impact the existing Sensitive Areas found near the site. In light of this result, this document will serve as your Service Provider letter as required by Resolution and Order 19-5, Section 3.02.1, as amended by Resolution and Order 19-22. All required permits and approvals must be obtained and completed under applicable local, state, and federal law.

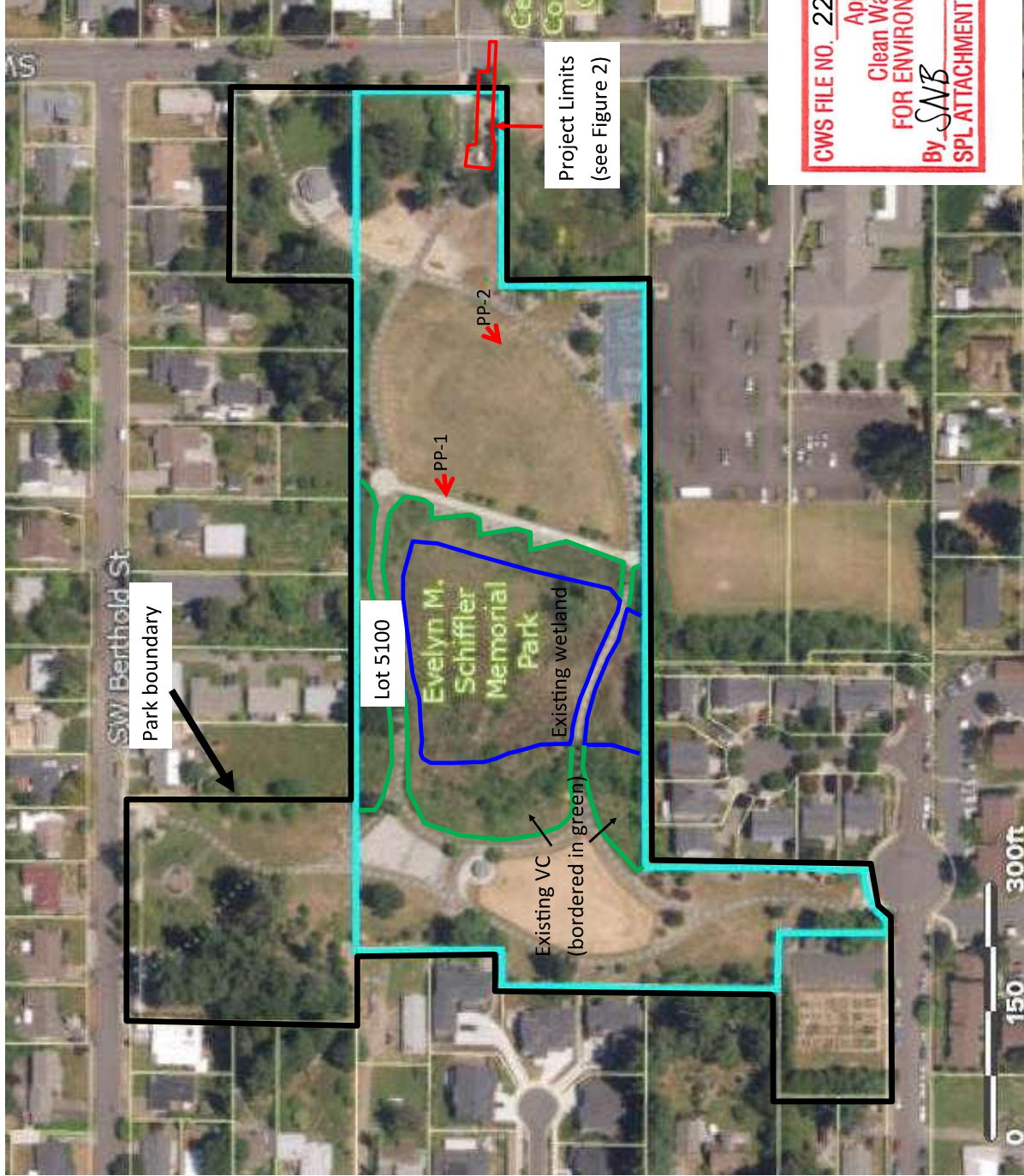
This letter does NOT eliminate the need to protect Sensitive Areas if they are subsequently identified on your site.

Sincerely,

Stacy Benjamin

Stacy Benjamin
Environmental Plan Review

Attachments (2)



CWS FILE NO. 22-001887

Approved
Clean Water Services
FOR ENVIRONMENTAL REVIEW

By *SAB* Date 8/30/2022
SPL ATTACHMENT 1 OF 2

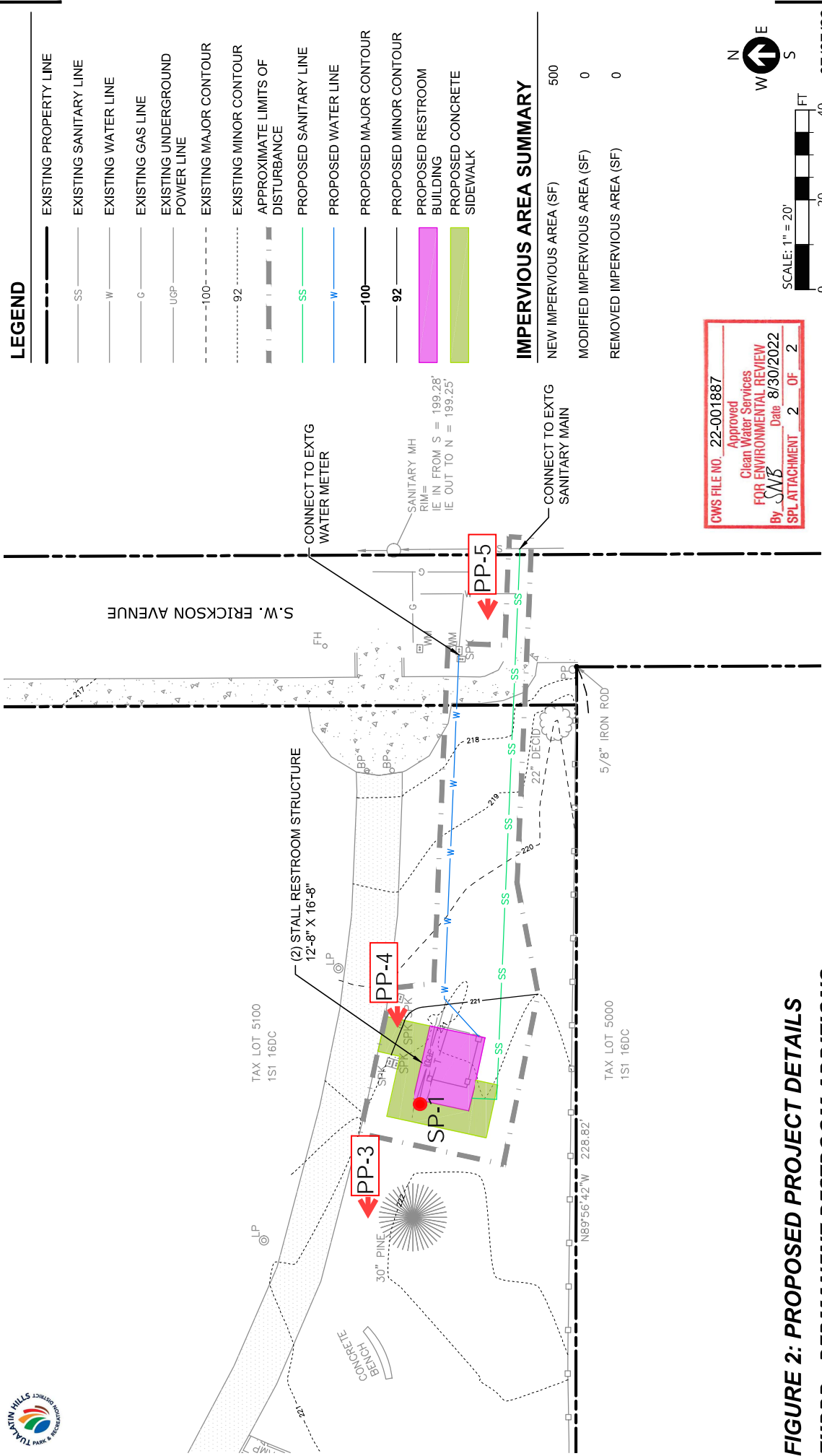
7505
8/18/2022



Pacific Habitat Services, Inc.
9450 SW Commerce Circle, Suite 180
Wilsonville, OR 97070

FIGURE
1

Project Site location
Evelyn M Schiffler Memorial Park; Beaverton
Portland Maps, 2022



CWS FILE NO. 22-001887
 Approved
 Clean Water Services
 FOR ENVIRONMENTAL REVIEW
 By *SAVB* Date 8/30/2022
 SPL ATTACHMENT 2 OF 2



07/07/22

EVELYN M. SCHIFFLER MEMORIAL PARK
 5495 SW ERICKSON AVENUE
 BEAVERTON, OR 97005

3J CONSULTING
 CIVIL ENGINEERING, WATER RESOURCES, COMMUNITY PLANNING